



Prospectus

Independant Alternative Education Schools
Academic Year 2022 - 23



> Welcome

Independent Alternative Education Schools

Now in our 14th year Educ8 provide Independent Alternative Education schools across England working with mainstream schools and local authorities. We provide effective learning environments for learners at risk of exclusion, or who are disengaged from mainstream education.

We now have independent school status at our Liverpool provision with a further three of our schools applying at the time our prospectus goes to print. By this time next year we hope all our provisions will have achieved Independent School status.

Our Vision

“ To create a ‘special’ environment in which everyone’s efforts are focused on achieving the best possible outcomes for every single learner. ”

At its heart is the vocational element which acts as the ‘hook’ for an engaging and personalised learning experience. We recognise that we are all individuals who learn in different ways and celebrate ‘diversity’ and ‘opportunity for all’ which form the ethos of our school.

Our Mission

To provide a rich education in which our learners can thrive with:

- > improved life skills
- > career pathways
- > and positive progression

We aim for reintegration back into mainstream school or for a positive post-16 destination.

We hope you find this prospectus helpful and look forward to welcoming you into one of our schools.



Scott Thornton
Executive Headteacher



> Our Schools

Off-site provision

All of our schools are unique in their layout and atmosphere but they each share in the common principles of Educ8. They are conveniently located, often on major bus routes, and generally close to city centres. They vary in size but on average have capacity for approximately 40 learners on roll.

We have schools in the following areas:



Admissions

Admissions to our schools are via referral and we operate a roll-on, roll-off system with places from 1 to 5 days per week¹.

Places can be taken by learners in Year 9 through Year 11 and includes those with SEND and specific SEMH needs.

Where we have achieved independent school status learners will be dual registered. In all other cases we will operate as a part-time alternative provision.

Our fees range from £75 - £95 + VAT per learner, per day²

¹Ensuring we meet legal requirements for part-time learning if we have not yet acquired independent school status ²Fees are exempt of VAT with independent school status and exclusive of VAT in all other cases.



> How we do it

A personalised curriculum

Our curriculum is designed to be both challenging and engaging with Functional Skills, PSHE and our Carousel Learning included daily. At its heart is the vocational element which acts as the 'hook' for our learners. Using the ForSkills platform we tailor our functional skills delivery to individual needs in order to help them progress.

Within PSHE we offer a full curriculum including Relationship, Sex Education that is age appropriate focusing on the following areas:

- > Healthy lifestyle
- > Living in the wider world
- > Relationships

Vocational Carousel

All learners take part in our vocational carousel programme which includes BTEC Level 1 Applied Science, Topic Learning, Physical Education and of course vocational options.

Vocational Options

Educ8 delivers a range of BTEC vocational qualifications with a specialism at level 1. Our pre-16 learners work within the level 1 Introductory suite. This suite provides flexible introductory skills-based qualifications designed to offer learners the practical skills and confidence they will need to progress to independent learning, further study or employment.

British Values & SMSC

We ensure that we actively promote the key fundamental British values of:

- > Democracy
- > The rule of law
- > Individual liberty
- > Mutual respect and tolerance

These values are embedded through our curriculum, and are further nurtured through our ethos and promotion of spiritual, moral, social and cultural (SMSC) understanding.

Personal Development

Boxall profile allows us to offer targeted support with learners social, emotional and behavioural needs. We ensure that learners with SEND are supported and treated equally. We aim to support all learners with their own personal development through well planned CIAG using Gatsby benchmarks to help enable our learners to progress.



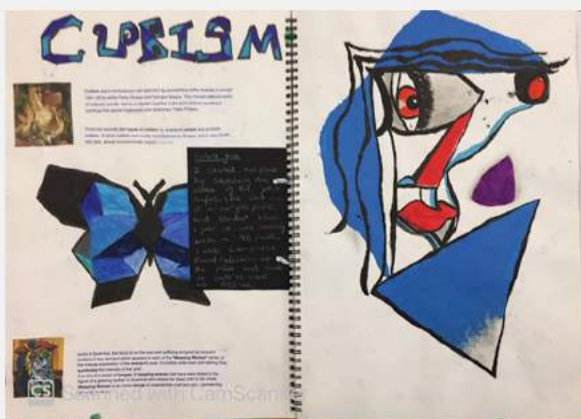
Example timetable

This is an example timetable that demonstrates a typical day at one of our schools.

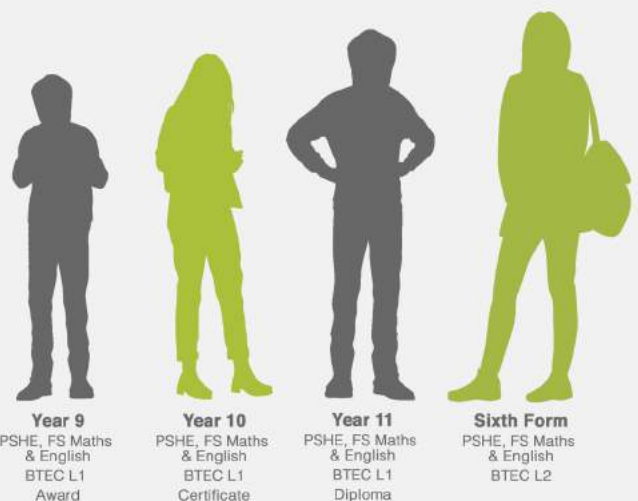
Time	Lesson
9:00 - 9:15	Breakfast Club
9:15 - 9:45	Form Time
9:45 - 10:30	Core 1
10:30 - 10:45	Break
10:45 - 11:30	Core 2
11:30 - 12:15	Core 3
12:15 - 12:45	Lunch
12:45 - 13:15	Topic Time
13:15 - 14:45	Vocational

The learning journey

On entry to our programme our initial goal is to try and support learners back into mainstream education. For some however this is not achievable and we are structured to provide a pathway from year 9 through to year 11 followed by a support programme for Post-16 learners if required.



Learner work from the BTEC Level 1 in Art & Design



BTEC Level 1 Introductory Qualifications

The mode of delivery and assessment in the units is designed to build awareness of a sector and the skills required to work in it. Learners will be given contexts and scenarios to help them develop skills and to acquire knowledge through application. Learners will not develop all the knowledge and skills needed to enter the labour market in a given sector but will develop pre-employability skills and contextualised knowledge to allow them to progress to further learning and training and, ultimately, to become successful in their chosen sector. This suite of qualifications are practical and inspiring for young people, they are assessed through assignments and using a grading scale of Distinction, Merit, Pass and Unclassified.



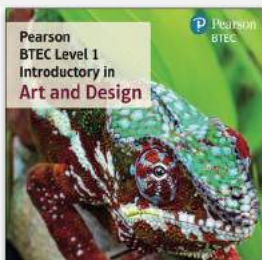
The content of this qualification offers a broad introduction to the skills and knowledge within the sector, allowing the delivery to be practical and active in order to engage learners. For applied science, the units cover topics such as investigating crime scene evidence, measuring waves used in technology and investigative variations in plants and animals.



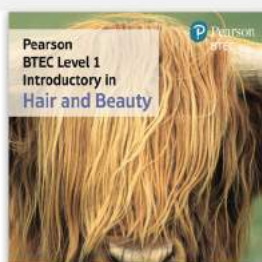
Giving learners the opportunity to develop a range of skills in the sport sector for example Designing a Training programme to enhance understanding of physical activity and how training influences the body. Getting people active looks at different barriers people may experience to become more active and how they can be encouraged. Playing sport focuses on learners looking at different techniques and evaluating their performance to improve their ability.



This course is designed to build awareness of the sector and the skills required to work in it. You will take part in public service and adventure activities. You will learn how to plan and navigate a route and how to effectively assist members of the public. You will learn how to make and carry out security checks and the rules and regulations around this. The course will help to build confidence and allow learner to use their core values.



Broad introduction to the Art and Design sector for example communicating ideas through the creation of mood boards for interior design, fashion or stage production. Creating art images using paint, inks, pastels and chalks, and experimenting with different techniques. Exploration of the process of designing a wide range of products, creating 2D and 3D art objects, and learning how to use photographic equipment to create images.



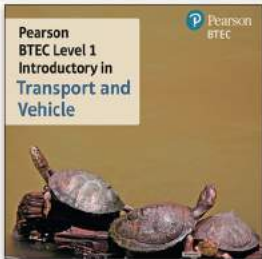
This course provides a perfect opportunity for learners to explore and experience the role of a salon junior, working as a team and contributing to salon related tasks in a salon environment. Learners will take part in practical sessions; hair styling, make-up application and nail art. An understanding of how and why we consult with clients, customer care and positive communication will also be gained.



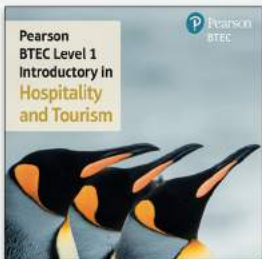
Learners will explore the various industries and sectors associated with the Health and Social care profession. Essential skills such as communication and interaction with patients are key to a successful career in Health and Social care, learners will develop these alongside modules which teach them about the practical tasks they may find themselves carrying out in the field such as measuring older adults fitness levels and supporting patients to use adaptive tools safely.



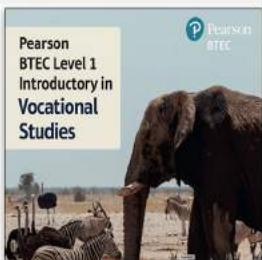
A comprehensive programme introducing learners to the key concepts surrounding childcare, including provision of activities to support emotional and social development, alongside academic development such as reading, numeracy and learning through everyday experiences. Learners will embark on practical projects focused on healthy diets for young children, planning and facilitating safe childcare environments.



Learners will understand the need to follow basic instructions and behavioural needs within the workplace including the correct use of tools and PPE with safe working practices. They will develop a hands on approach to working with motor vehicles, either cars or motorcycles, and take part in practical tasks such as brakes, oil and filter changes, replacing worn tyres and checking suspensions. They will also gain an understanding of the requirements in becoming a road user.



You will learn to prepare, cook and serve food and beverages to customers. Alongside this learners will also gain an understanding of how to follow given recipes. Within the tourism sector, you will learn how to gain information from a website and present customers with a detailed quotation and itinerary for their holiday choices including flights and accommodation.



Level 1 Introductory Vocational Studies gives the opportunity to create a tailored course that's specific to the learners needs. Learners complete core units and choose from optional units from different sectors outlined in the above courses.



eSports

Try our new introductory programme

The Esports industry is a fast-growing global industry. Esports is defined as organised competitive gaming, which is human versus human, either as individuals or in teams. Educ8 will be delivering this qualification at level 1 using the BTEC Vocational Studies qualification.

It provides an opportunity for alignment of social, physical, mental and financial skills into one qualification to deepen and expand learning, skills which are highly valued in the changing and fluid workplace.

Learners must apply strategy, skill and teamwork to be successful.

In summary the eSports programme aims to:

- ▶ promotes leadership skills and teamwork
- ▶ boosts social and communication skills
- ▶ develops problem solving, decision-making and multitasking abilities

- ▶ improves cyber, digital and other transferable skills
- ▶ develops friendships and communities
- ▶ and more...

Contact us now for further information and to see which of our learning centres are offering this qualification



> Our Results

We are outcome focused

Educ8 achieves high outcomes based on having a staff to pupil ratio of 1:5. Schools are equipped with up to date resources and a recruitment process which identifies dedicated and experienced tutors who then deliver exciting and engaging lessons. The results we achieve demonstrate our commitment to encourage learners to achieve to the best of their capabilities.

We work in 5 different local authority areas, have an average of 140 learners on programme, and work with more than 40 referrers.

Over 90% of our learners register onto more than one qualification and of those 93% attain those qualifications. Of the learners entering our programmes 94% stay with us until completion and 98% progress to a positive destination.

*Results from academic year 20-21

93%
Attainment

Achieving qualifications is only part of what we do but nevertheless extremely important....

94%
Retention

Engaging and exciting delivery enables excellent retention....

98%
Progression

We are extremely proud of our learners achievements with progression....

76%
Attendance

Providing engaging learning and individual support encourages learners to attend....





> Rewards & Behaviour

R.E.A.C.H Reward Scheme

Our REACH reward scheme incentivises learners to be READY, ENGAGED, ACTIVE, CREATIVE, and HEROIC by awarding points every lesson. Learners can achieve weekly 'Ambassador' status and those that maintain this status for the half term obtain a choice of rewards.

Code of Behaviour

Each of our centres operate with the same code of behaviour:

- Show a high level of attendance and arrive on time
- Dress and be equipped for learning
- Follow the agreed timetable and enjoy your lessons
- Respect all equipment and facilities
- Be respectful to others
- Contribute positively at all times
- Hand in phones for safekeeping



Rewards

The reward scheme is embedded throughout the day using a scoring system. Staff score learners contributions to each lesson and record this on CLM. Special certificates are given to high scoring learners and rewards also link to reward activities and in some of our centres specialist reward rooms with access to games consoles and pool tables. Rewards are given for a variety of achievements including completion of good work, attitude to learning, accomplishments outside of our programme etc.



Sanctions

Learners are encouraged to comply with our Code of Behaviour, however if they fall short, then they are likely to follow the disruption process below.

Low Level Disruption: this will involve 1 to 1 dialogue between learner and tutor. It will aim to 'nip in the bud' disruptive behaviour and will be recorded on CLM. A sanction may be applied. Continuous low level disruption will be upgraded to 'High Level Disruption'.

High Level Disruption: a formal behaviour meeting will be arranged including referrer and parents/carers. This will be recorded on CLM and a sanction applied.

Permanent Exclusion: If all attempts to rectify poor behaviour are exhausted with still no positive outcome then our final consequence is removal from our provision on a permanent basis. This will only be carried out with the support of the referrer and parents/carers.

> Reporting

Attendance

We have invested in Collaborative Learning Manager (CLM) which is a web interface that links schools and referrers with us as an alternative education provider.

- CLM enables registers to be taken by us and the results are then instantly available to schools and referrers.
- Unexplained absences are highlighted immediately and the school can take action and edit the mark as an authorised or unauthorised absence with accompanying notes
- At a glance reports show attendance by learner, by course, by school over varying time periods

Course Cohort				Attendance (01/09/2018 to 08/01/2019)										
Provider	Title	Start	End	enrolled register	register absent	total attendance	present	absent	late	unauthorised	authorised	other	other	other
Wyggoston	The Diploma: Construction and the Built Environment, Higher Level 2	01/09/2017	31/08/2019	74	361	326	35	1	3	5				
				76	97.8%	95.1%	8.5%	0.5%	2.8%	1.4%				
Wyggoston	The Diploma: Construction and the Built Environment, Higher Level 2	01/09/2018	31/08/2020	74	363	324	39	4	1	2				
				76	98.1%	97.5%	10.2%	1.7%	0.5%	0.5%				
Wyggoston	BTEC First Diploma in Sport	01/09/2017	31/08/2019	72	351	318	33	2		7				
				72	97.6%	95.3%	9.2%	0.8%		1.0%				
Wyggoston	BTEC First Diploma in Sport	01/09/2018	31/08/2020	72	356	317	39	3		1				
				72	98.9%	95.1%	10.0%	0.0%		0.3%				

Absence

If a learner is unable to attend we ask parents and/or carers to contact the Centre Manager giving reasons for absence and a likely return date. If a learner fails to attend and no contact has been received we will make every effort to contact parents and/or carers by 10:30am. If necessary referrers and key workers will also be contacted.

Safeguarding

Educ8 uses award winning MyConcern as its safeguarding monitoring platform. MyConcern is used by our Designated Safeguarding Leads (DSL) and Deputies to report, monitor and manage safeguarding and wellbeing concerns. The MyConcern platform provides our Safeguarding Leads piece of mind that they are meeting the statutory, legal and moral obligations they have to those in their care. The MyConcern platform provides each school's DSL with multiple features including simple, secure recording and case management, customised reports, automated chronologies, lessons learned and document sign off.

Communication with parents/carers

We have a variety of ways we communicate with parents and carers including:

- Telephone
- Text messaging
- Email
- First day absence reporting
- Letters home
- Parents evenings





> Progression

98%
Progression

Nearly all of our learners progress back to school, on to college, or into further training,

Overcoming barriers

Progression is key to our success. We want to see all of our learners develop and overcome the barriers that have prevented them from enjoying learning within mainstream education. We are dedicated to this goal and aim to provide all students with improved life skills, career pathways and positive progression either with re-integration back in to mainstream school or on to post-16 education, or further training.

Careers Information Advice & Guidance

Educ8 support learners with their personal development through well planned CIAG using Gatsby benchmarks.

These focus on:

- > A stable carers programme
- > Learning from careers and labour market information
- > Addressing the needs of each learner
- > Embedded careers information within the whole curriculum
- > Encounters with employers and employees to help provide information about the working world
- > Working with schools to provide work experience opportunities
- > Encounters with further and higher education to make informed choices
- > Provide personal guidance with the next steps



78% PROGRESS TO A POSITIVE DESTINATION



> Life After School

NEET to EET Programme

We have worked with hundreds of year 11 learners and witnessed first hand the challenges they face transitioning from school into a positive destination. For some the step appears too large and they are not ready. The 'Life After School' programme supports these vulnerable learners as they are coming to the end of year 11. It is open to all learners not just those that are currently on Pre-16 programmes with us.

They will have a dedicated support worker and access to online and paper based resources. They will receive up to 2½ hours of support each week over a period up to 24 weeks, regardless of whether they have entered a positive destination or not.

The cost of the programme to schools is from £750*

*Alternative provision schools and colleges may be able to access 'Alternative provision: year 11 transition funding' from Government to the end of the 2020 autumn term.

Features of the programme are:

- **Roll-on, roll-off, up to 24 weeks and 60 hours**
Typically we work with participants for 2½ hours per week combining small group work with 1-to-1 activities
- **1-to-1 sessions focusing on engagement, trust building and training**
Alongside building self-esteem and confidence we deliver a range job specific training modules.
- **Work experience and volunteering**
Once the participant is ready fully risk assessed placements can be organised to enhance their progression to a positive destination
- **Learner bursary of £100**
This is intended to support with learning including transport, PPE, clothing etc.

Our locations

Coventry

Moat House Leisure Centre
Winston Avenue
Coventry
CV2 1EA

c: Anthony Allen
t: 024 7736 0053
e: coventry@educ8group.com

Leicester

Allexton Youth & Community Centre
Frolesworth Road
Leicester
LE3 6LP

c: Anthony Allen
t: 0116 403 0307
e: leicester@educ8group.com

Redcar

Unit 4, Southbank Business Centre
A66 & Normanby Road
Middlesbrough
TS6 6SR

c: Craig Fletcher
t: 01642 939744
e: redcar@educ8group.com

Northumberland

19 High Market
Ashington
Northumberland
NE63 8NE

c: Craig Fletcher
t: 0191 691 1819
e: northumberland@educ8group.com

Liverpool (DfE 343/6003)

St Oswalds Church Centre
Ronald Ross Avenue
Netherton
L30 5RD

c: Debi Capper
t: 0151 662 0199
e: liverpool@educ8group.com

educ8

Educ8 Headquarters

80 Jackson Road, Bagworth, Leicestershire, LE67 1HL

0116 403 0003

enquiries@educ8group.com

www.educ8group.com



@educ8group